

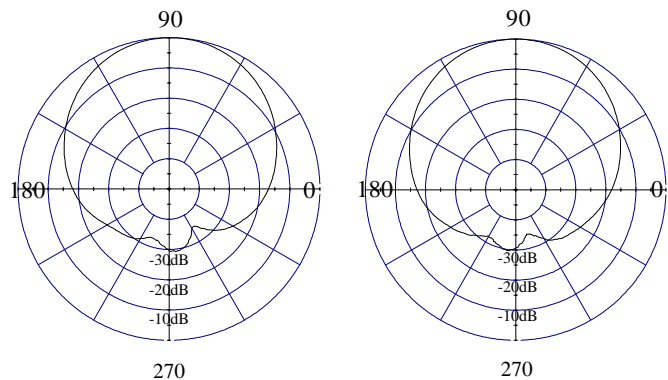
Model 3950-324/3950-344, 64°, 17.5 dBi (15.4 dBd) Panel

ELECTRICAL CHARACTERISTICS

Frequency Range	806- 960 MHz
Beamwidth: Horizontal-plane	64° ± 5° (at -3 dB)
Vertical-plane	9.5° ± 1° (at -3 dB)
Max / Min Gain	17.5/16.1 dBi (15.4/14 dBd)
Electrical Downtilt	0°
Side Lobes	≤ -12 dB
Front-to-Back Ratio	≤ -23 dB
Port to Port Isolation	≤ -30 dB

GENERAL CHARACTERISTICS

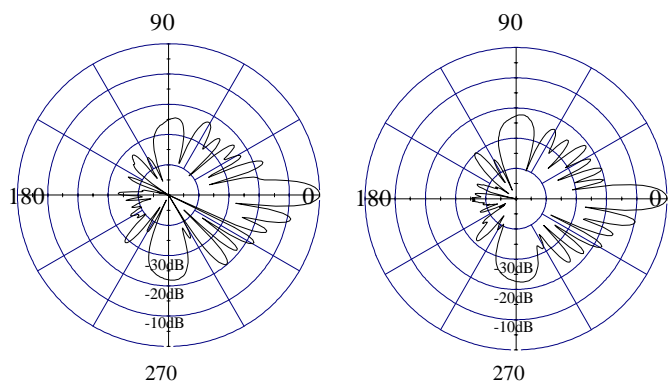
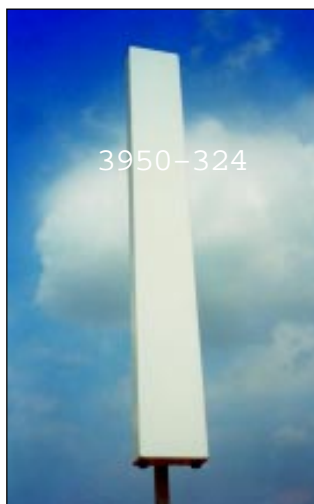
Impedance	50 Ω
VSWR	≤ 1.4:1
Polarization	± 45°
Rated Power	500 W



Polar + 45°

Polar - 45°

HORIZONTAL - PLANE



Polar + 45°

Polar - 45°

VERTICAL - PLANE

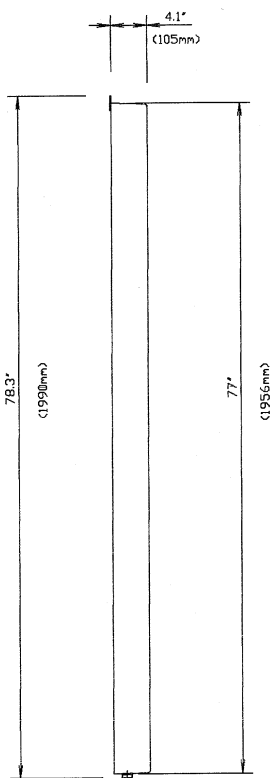


Model 3950-324/3950-344, 64°, 17.5 dBi(15.4 dBd) Panel

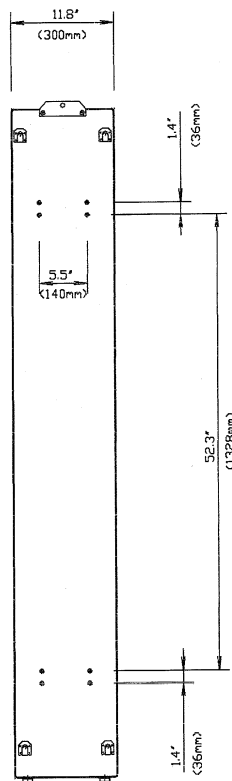
MECHANICAL CHARACTERISTICS

Height x Width x Depth	76.9" x 11.8" x 4.1" (1956 x 300 x 105 mm)
Weight	35.4 lbs (16 kg)
Wind Survival Rating	125 mph (200 km/h)
Wind Load (at 100 mph)	950 N (frontal F1) 415 N (lateral F2)
Flat Plate Equivalent Area	6.32 ft ² (0.59 m ²)
Connector Types (Female)	Type N, or 7/16 DIN
Materials: Antenna/Radome	Aluminum / ABS

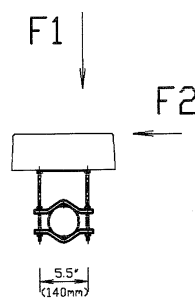
SIDE VIEW



REAR VIEW



TOP VIEW



MOUNTING HARDWARE

Mounting Brackets*	Fix 903 (1.25" - 3.5" OD pipe) (30 - 90 mm OD pipe) Fix 905 (2" - 4.7" OD pipe) (50 - 120 mm OD pipe)
Mechanical Tilt Brackets (optional)	Model TB-3990

* Antenna without TB-3990 requires Fix 905 Mounting Brackets