

Model 58010-360BA, 85° Panel

Dual Band - Dual Polarized ($\pm 45^\circ$)

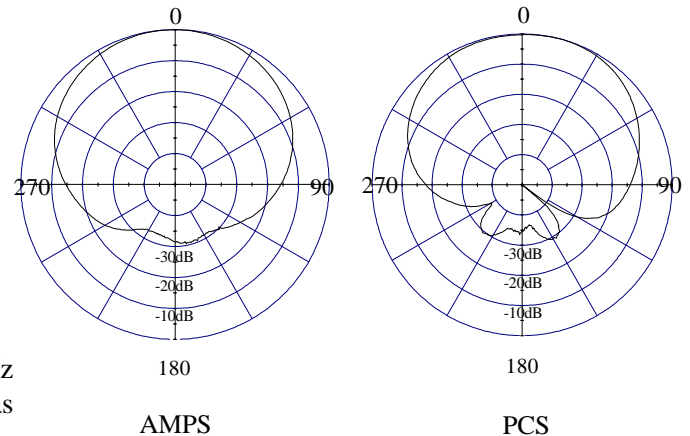
ELECTRICAL CHARACTERISTICS

	AMPS	PCS
Frequency Range	820 - 900 MHz	1850 - 1990 MHz
Beamwidth: Horizontal-plane	$83^\circ \pm 2^\circ$ (at -3 dB)	$88^\circ \pm 5^\circ$ (at -3 dB)
Vertical-plane	$10^\circ \pm 1^\circ$ (at -3 dB)	$7^\circ \pm 0.5^\circ$ (at -3 dB)
Max / Min Gain	14.7/14.3 dBi (12.6/12.1 dBd)	15.5/14.9 dBi (13.4/12.8 dBd)
Electrical Tilt	0° (available -2°)	0° (available -2°)
First Upper Side Lobe	≤ -18 dB	≤ -18 dB
Port to Port Isolation	≤ -23 dB	≤ -25 dB
Front-to-Back Ratio	≤ -26 dB	≤ -32 dB
Intermodulation IM3 (2x43 dBm carrier)	< -150 dBc	< -150 dBc

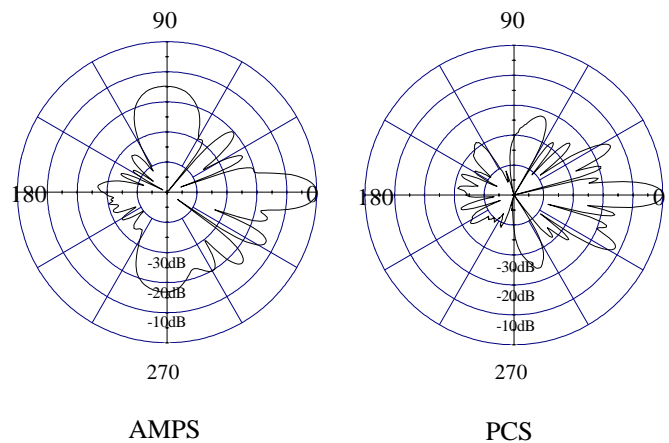
GENERAL CHARACTERISTICS

Impedance	50 Ω
VSWR	$\leq 1.4:1$
Polarization	$\pm 45^\circ$
Rated Power	AMPS: 400 W PCS: 200 W

The HARMONY™ antennas, similar in height to 800 MHz antennas, combine on a single ground plane two antennas (1 for 800MHz and 1 for 1900MHz).



HORIZONTAL PLANE



VERTICAL PLANE

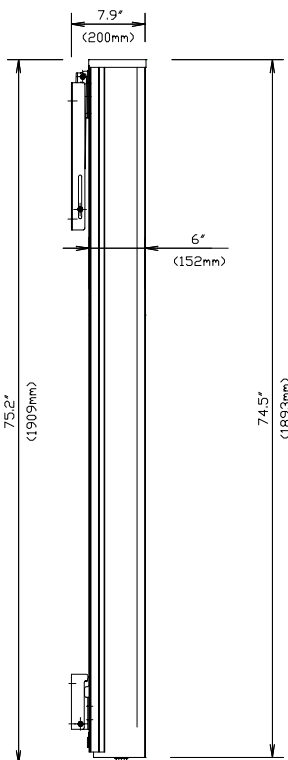
Model 58010-360BA, 85° Panel

Dual Band - Dual Polarized (± 45)

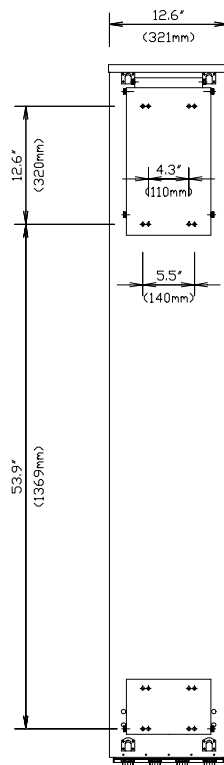
MECHANICAL CHARACTERISTICS

Height x Width x Depth	74.5" x 12.6" x 6" (1893 x 321 x 152 mm)
Weight	42.0 lbs (19 kg)
Wind Survival Rating	125 mph (200 km/h)
Wind Load (at 100 mph)	783 N (frontal F1) 428 N (lateral F2)
Flat Plate Equivalent Area	6.56 ft ² (0.61 m ²)
Connector Types (Female)	7/16 DIN
Materials:Antenna/Radome	Aluminum / ABS

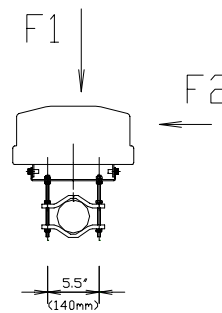
SIDE VIEW



REAR VIEW



TOP VIEW



MOUNTING HARDWARE

Mounting Brackets	Fix 903 (1.25" - 3.5" OD pipe) (30 - 90 mm OD pipe)
	Fix 905 (2" - 4.7" OD pipe) (50 - 120 mm OD pipe)
Mechanical Tilt Brackets	Model TB-39B