

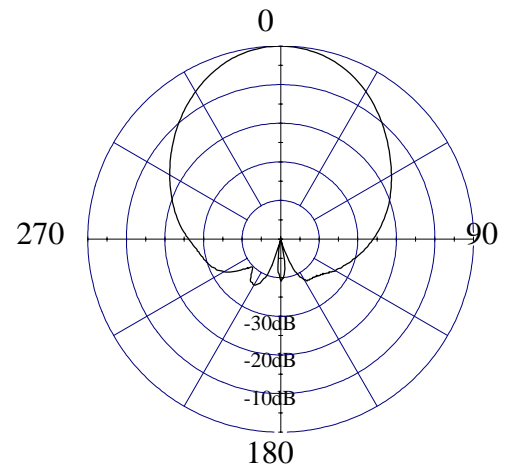
Model 89010/89010S, 40°, 21.4 dBi (19.3 dBd) Panel

ELECTRICAL CHARACTERISTICS

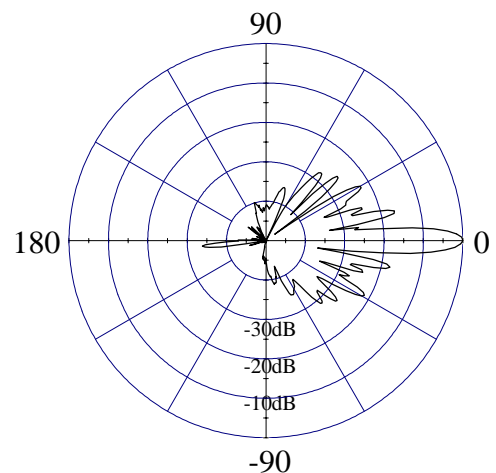
	DCS / PCS
Frequency Range	1710 - 1990 MHz
Beamwidth: Horizontal-plane Vertical-plane	40° ± 2° (at -3 dB) 5.5° ± 0.5° (at -3 dB)
Max / Min Gain	21.4/20.4 dBi (19.3/18.3 dBd)
Electrical Downtilt	0° (available -2°)
Side Lobes	≤ -16 dB
Front-to-Back Ratio	≤ -31 dB

GENERAL CHARACTERISTICS

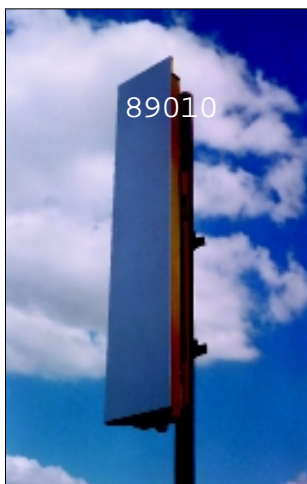
Impedance	50 Ω
VSWR	≤ 1.4:1
Polarization	Vertical
Rated Power	500 W



HORIZONTAL - PLANE



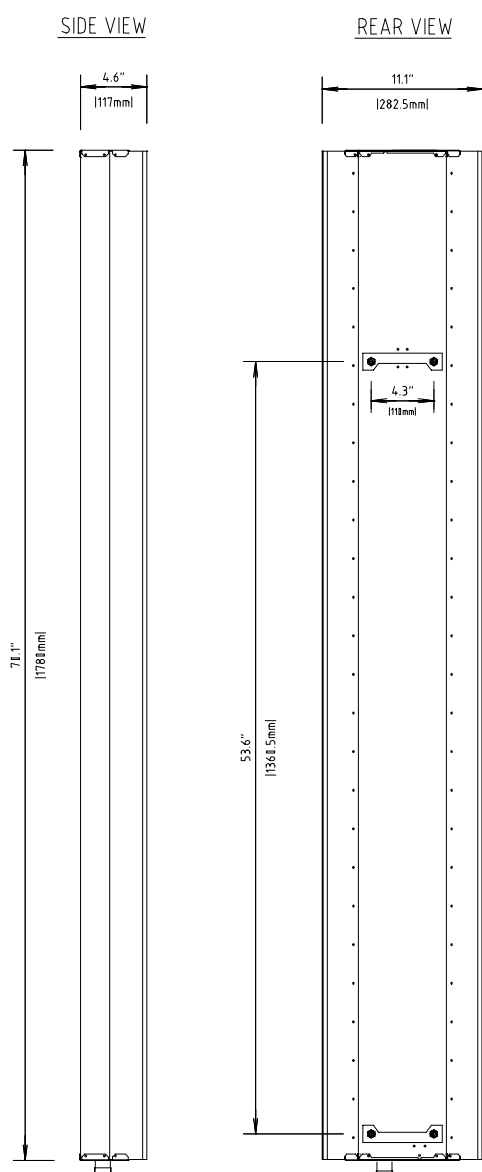
VERTICAL - PLANE



Model 89010/89010S, 40°, 21.4 dBi (19.3 dBd) Panel

MECHANICAL CHARACTERISTICS

Height x Width x Depth	70.1" x 11.1" x 4.6" (1780 x 282.5 x 117 mm)
Weight	23.2 lbs (10.5 kg)
Wind Survival Rating	125 mph (200 km/h)
Wind Load (at 100 mph)	810 N (frontal F1) 402 N (lateral F2)
Flat Plate Equivalent Area	5.38 ft ² (0.50 m ²)
Connector Types(Female)	7/16 DIN (Type N available)
Materials:Antenna/Radome	Aluminum / ABS



MOUNTING HARDWARE

Mounting Brackets	Fix 903 (1.25" - 3.5" OD pipe) (30 - 90 mm OD pipe)
Mechanical Tilt Brackets (optional)	Model TB-9 / TB-S