

Series 024501, 70°, 11 dBi (8.9 dBd) Mobile identification Antennas

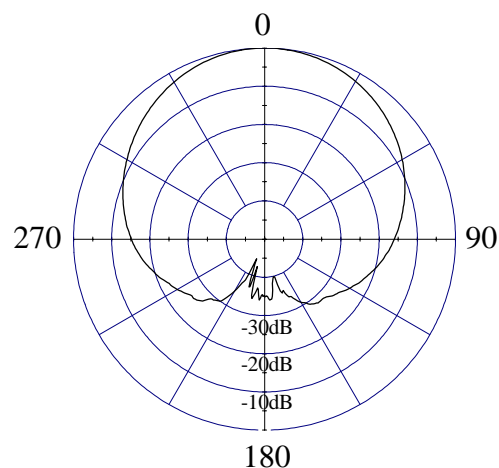
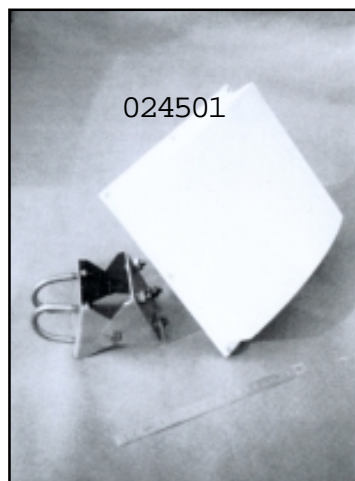
ELECTRICAL CHARACTERISTICS

Frequency Range	2400-2500 MHz
Beamwidth: H-plane	70° ± 5° (at -3 dB)
E-plane	35° ± 1° (at -3 dB)
Gain	11 dBi (8.9 dBd)
Electrical Downtilt	0°

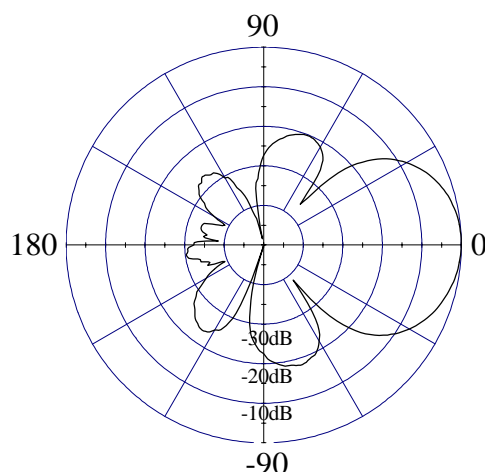
GENERAL CHARACTERISTICS

Impedance	50 Ω
VSWR	≤ 1.5:1
Polarization	Vertical or Horizontal
Rated Power	100 W

Linear polarization array type antennas made of two half-wave dipoles placed in front of a reflector. Lightweight, they have been specially designed to be installed on a mast nearby a highway toll booth or an identification centre for identifying mobiles.



H - PLANE



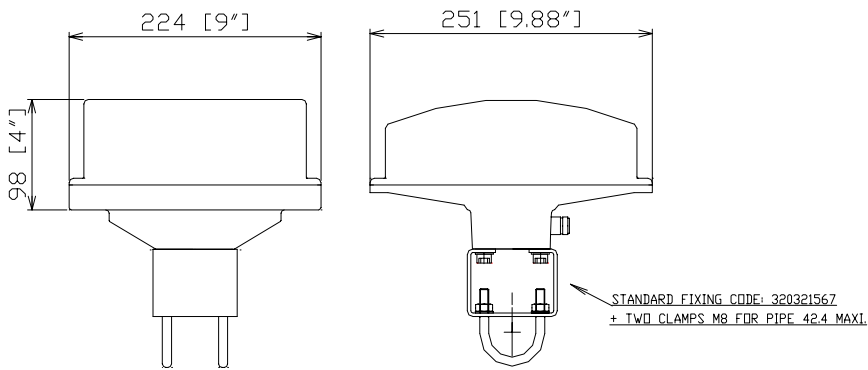
E - PLANE

Series 024501, 70°, 11 dBi (8.9 dBd)

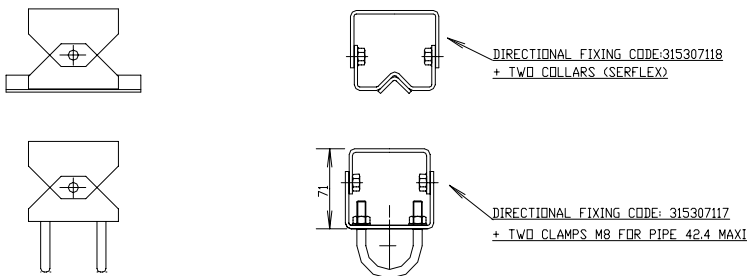
Mobile identification Antennas

MECHANICAL CHARACTERISTICS

Height x Width x Depth	9.9" x 8.8" x 3.9" (251x 224 x 98 mm)
Weight	4.4 lbs (2 kg)
Wind Survival Rating	125 mph (200 km/h)
Wind Load (at 100 mph)	80 N (frontal F1) 36 N (lateral F2)
Flat Plate Equivalent Area	0.64 ft ² (0.06 m ²)
Connector Types(Female)	Type N
Materials:Antenna/Radome	Aluminum/ABS



FIXING IN OPTION



MOUNTING HARDWARE

Mounting Brackets	
Standard	320321567 (1.6" OD pipe Max)
optional	315307118 315307117 (1.6" OD pipe Max)