

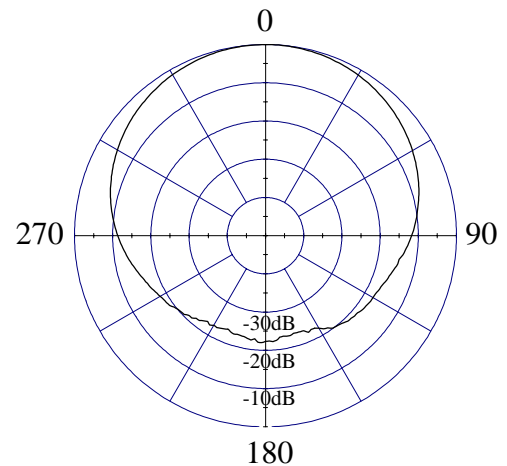
# Model 2980-005/2980-015, 89°, 15.9 dBi(13.8 dBd)Panel

## ELECTRICAL CHARACTERISTICS

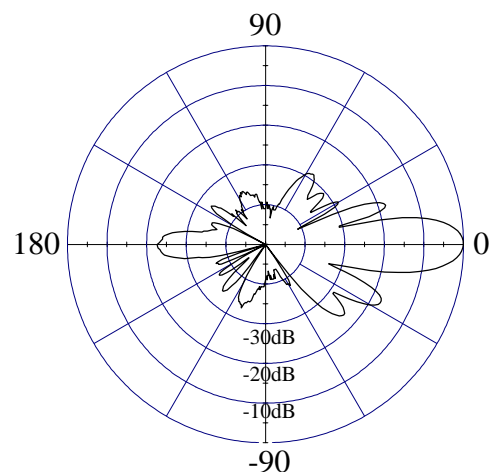
|                             |                                   |
|-----------------------------|-----------------------------------|
| Frequency Range             | 806 - 960 MHz                     |
| Beamwidth: Horizontal-plane | $89^\circ \pm 2^\circ$ (at -3 dB) |
| Vertical-plane              | $11^\circ \pm 1^\circ$ (at -3 dB) |
| Maximum / Minimum Gain      | 15.9/15.2 dBi (13.8/13.1 dBd)     |
| Electrical Downtilt         | 0° (available -6°, -10°, -15°)    |
| Side Lobes                  | $\leq -16$ dB                     |
| Front-to-Back Ratio         | $\leq -22$ dB                     |

## GENERAL CHARACTERISTICS

|              |              |
|--------------|--------------|
| Impedance    | 50 $\Omega$  |
| VSWR         | $\leq 1.4:1$ |
| Polarization | Vertical     |
| Rated Power  | 500 W        |



HORIZONTAL - PLANE



VERTICAL - PLANE



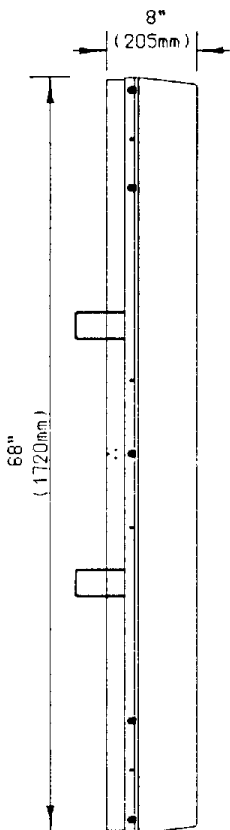


# Model 2980-005/2980-015, 89°, 15.9 dBi(13.8 dBd)Panel

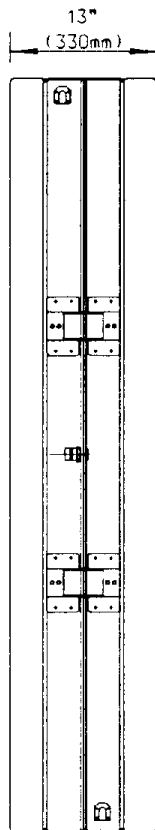
## MECHANICAL CHARACTERISTICS

|                                    |   |
|------------------------------------|---|
| <b>Height x Width x Depth</b>      | 68" x 13" x 8"<br>(1720 x 330 x 205 mm)     |
| <b>Weight</b>                      | 33.1 lbs (15 kg)                            |
| <b>Wind Survival Rating</b>        | 125 mph (200 km/h)                          |
| <b>Wind Load (at 100 mph)</b>      | 906 N (frontal F1)<br>610 N (lateral F2)    |
| <b>Flat Plate Equivalent Area</b>  | 6.11 ft <sup>2</sup> (0.57 m <sup>2</sup> ) |
| <b>Connector Types (Female)</b>    | Type N, or 7/16 DIN                         |
| <b>Materials: Antenna / Radome</b> | Aluminum / ABS                              |

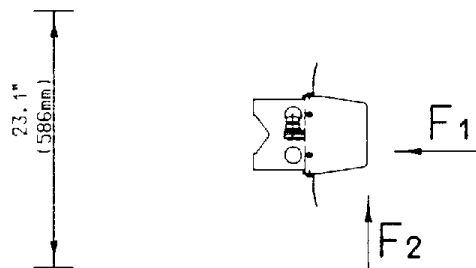
SIDE VIEW



REAR VIEW



TOP VIEW



## MOUNTING HARDWARE

|  |  |
|--|--|
| <b>Mounting Brackets (standard)</b>        | <b>Fix 903</b> (1.25" - 3.5" OD pipe)<br>(30 - 90 mm OD pipe)  |
| <b>Mounting Brackets (optional)</b>        | <b>Fix 905</b> (2" - 4.7" OD pipe)<br>(50 - 120 mm OD pipe)    |
|  | <b>Fix 902</b> (4.5" - 6.6" OD pipe)<br>(115 - 170 mm OD pipe) |
| <b>Mechanical Tilt Brackets (optional)</b> | Model <b>307780</b>  |