

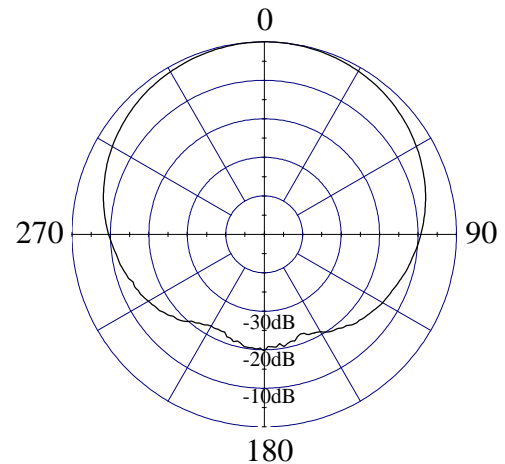
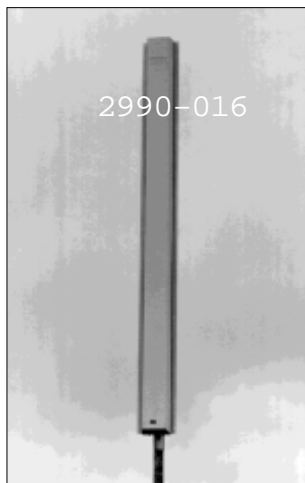
Model 2990-006/2990-016, 102°, 16.6 dBi(14.5 dBd)Panel

ELECTRICAL CHARACTERISTICS

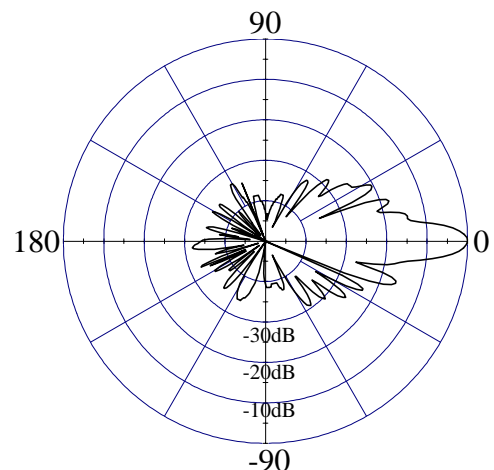
Frequency Range	806 - 960 MHz
Beamwidth: Horizontal-plane Vertical-plane	102° ± 3° (at -3 dB) 7° ± 0.5° (at -3 dB)
Maximum / Minimum Gain	16.6/16 dBi (14.5/13.9 dBd)
Electrical Downtilt	0° (available -6°, -10°)
Side Lobes	≤ -16 dB
Front-to-Back Ratio	≤ -20 dB

GENERAL CHARACTERISTICS

Impedance	50 Ω
VSWR	≤ 1.5:1
Polarization	Vertical
Rated Power	500 W



HORIZONTAL - PLANE



VERTICAL - PLANE

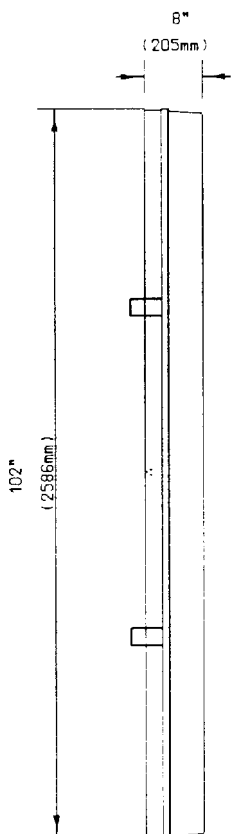


Model 2990-006/2990-016, 102°, 16.6 dBi(14.5 dBd) Panel

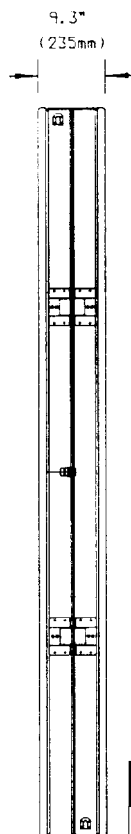
MECHANICAL CHARACTERISTICS

Height x Width x Depth	102" x 9.3" x 8" (2586 x 235 x 205 mm)
Weight	45.4 lbs (20.6 kg)
Wind Survival Rating	125 mph (200 km/h)
Wind Load (at 100 mph)	1082 N (frontal F1) 969 N (lateral F2)
Flat Plate Equivalent Area	6.54 ft ² (0.61 m ²)
Connector Types (Female)	Type N, or 7/16 DIN
Materials: Antenna / Radome	Aluminum / ABS

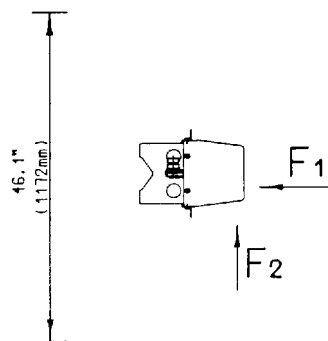
SIDE VIEW



REAR VIEW



TOP VIEW



MOUNTING HARDWARE

Mounting Brackets (standard)	Fix 903 (1.25" - 3.5" OD pipe) (30 - 90 mm OD pipe)
Mounting Brackets (optional)	Fix 905 (2" - 4.7" OD pipe) (50 - 120 mm OD pipe)
	Fix 902 (4.5" - 6.6" OD pipe) (115 - 170 mm OD pipe)
Mechanical Tilt Brackets (optional)	Model 308301