

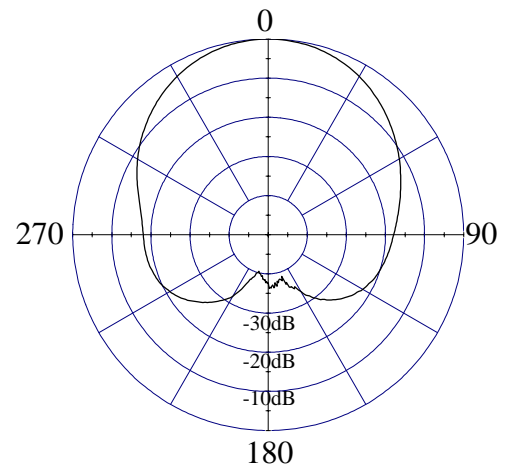
Model 3960-024/3960-044, 60°, 15.9 dBi(13.8 dBd) Panel

ELECTRICAL CHARACTERISTICS

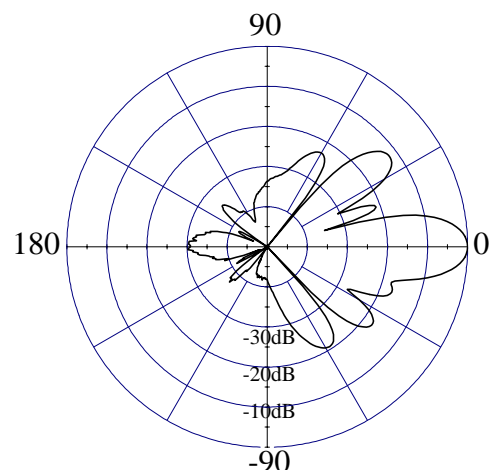
Frequency Range	806 - 960 MHz
Beamwidth: Horizontal-plane	60° ± 4° (at -3 dB)
Vertical-plane	14.5° ± 1.5° (at -3 dB)
Maximum / Minimum Gain	15.9/14.9 dBi (13.8/12.8 dBd)
Electrical Downtilt	0° (available -1° to -15°)
Side Lobes	≤ -16 dB
Front-to-Back Ratio	≤ -28 dB

GENERAL CHARACTERISTICS

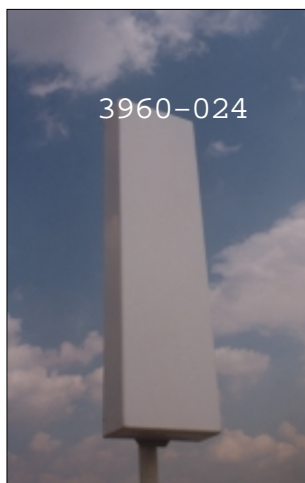
Impedance	50 Ω
VSWR	≤ 1.4:1
Polarization	Vertical
Rated Power	500 W



HORIZONTAL - PLANE



VERTICAL - PLANE



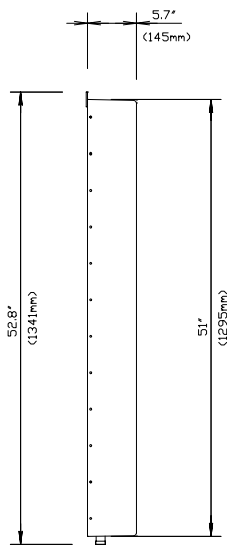


Model 3960-024/3960-044, 60°, 15.9 dBi(13.8 dBd) Panel

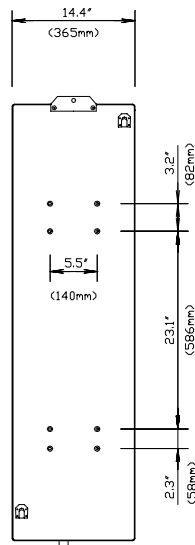
MECHANICAL CHARACTERISTICS

Height x Width x Depth	51" x 14.4" x 5.7" (1290 x 365 x 145 mm)
Weight	21.2 lbs (9.6 kg)
Wind Survival Rating	125 mph (200 km/h)
Wind Load (at 100 mph)	726 N (frontal F1) 319 N (lateral F2)
Flat Plate Equivalent Area	5.1 ft ² (0.47 m ²)
Connector Types (Female)	Type N, or 7/16 DIN
Materials: Antenna / Radome	Aluminum / ABS

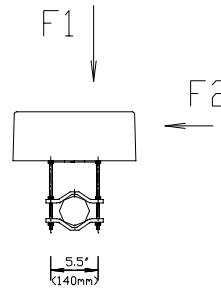
SIDE VIEW



REAR VIEW



TOP VIEW



MOUNTING HARDWARE

Mounting Brackets*	Fix 903 (1.25" - 3.5" OD pipe) (30 - 90 mm OD pipe) Fix 905 (2" - 4.7" OD pipe) (50 - 120 mm OD pipe)
---------------------------	--

Mechanical Tilt Brackets (optional) Model **TB-3960**

* Antenna without TB-3960 requires Fix 905 Mounting Brackets