

Model 3G18-DH-0T-0T-X, 60° Panel

Dual Band - Dual Polarized ($\pm 45^\circ$) - Two Variable Tilt (manual setting or by remote control unit)

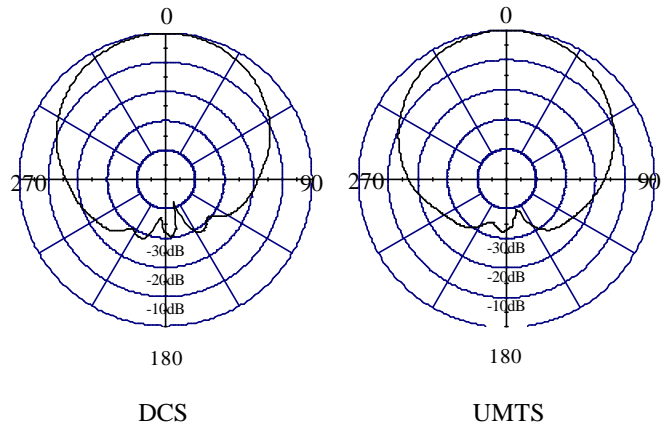
ELECTRICAL CHARACTERISTICS

	DCS	UMTS
Frequency Range	1710 - 1880 MHz	1900 - 2170 MHz
Beamwidth: Horizontal-plane	$60^\circ \pm 5^\circ$ (at -3 dB)	$60^\circ \pm 5^\circ$ (at -3 dB)
Vertical-plane	$7^\circ \pm 0.5^\circ$ (at -3 dB)	$7^\circ \pm 0.5^\circ$ (at -3 dB)
Gain	17.5 dBi (15.4 dBd)	17.5 dBi (15.4 dBd)
Variable Electrical Tilt ACCUTILT™	0° to -8° (continuous)	0° to -8° (continuous)
First Upper Side Lobe	≤ -18 dB	≤ -18 dB
Typical Null Filling	≥ -20 dB	≥ -20 dB
Port to Port Isolation	≤ -30 dB	≤ -30 dB
Front-to-Back Ratio	≤ -30 dB	≤ -30 dB
Intermodulation IM3 (2x43 dBm carrier)	< -150 dBc	< -150 dBc

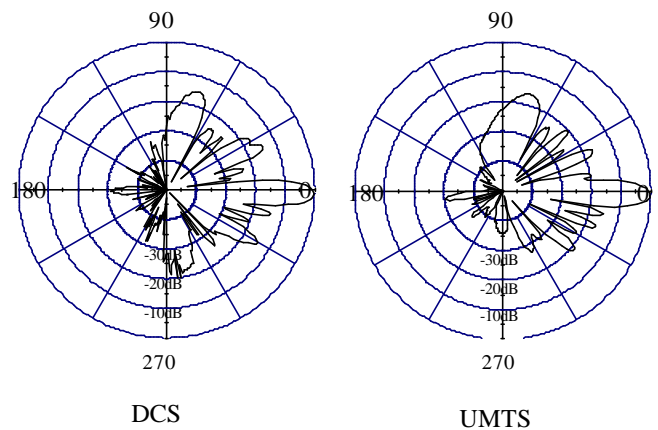
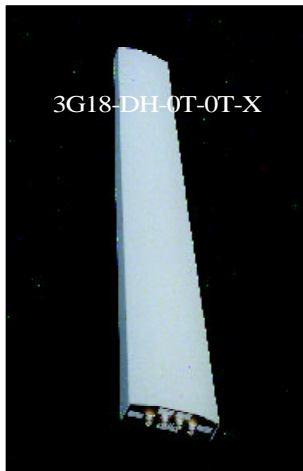
GENERAL CHARACTERISTICS

Impedance	50 Ω
VSWR	$\leq 1.4:1$
Polarization	$\pm 45^\circ$
Rated PowerDCS:	300 W
UMTS:	300 W

The SYMPHONY antennas combine on a single ground plane two antennas (1 for DCS and 1 for UMTS).



HORIZONTAL PLANE



VERTICAL PLANE



Model 3G18-DH-0T-0T-X, 60° Panel

Dual Band - Dual Polarized (± 45) - Two Variable Tilt (manual setting or by remote control unit)

MECHANICAL CHARACTERISTICS

Height x Width x Depth	58.2" x 13.0" x 3.9" (1480 x 330 x 100 mm)
Weight	33.2 lbs (15 kg)
Wind Survival Rating	125 mph (200 km/h)
Wind Load (at 100 mph)	764 N (frontal F1) 284 N (lateral F2)
Flat Plate Equivalent Area	5.27 ft ² (0.49 m ²)
Connector Type (Female)	7/16 DIN
Materials:Antenna/Radome	Aluminum / Polyester

MOUNTING HARDWARE

Mounting Brackets	Fix 903 (1.25" - 3.5" OD pipe) (30 - 90 mm OD pipe) Fix 905 (2" - 4.7" OD pipe) (50 - 120 mm OD pipe)
Mechanical Tilt Brackets (optional)	Model TB-39B