

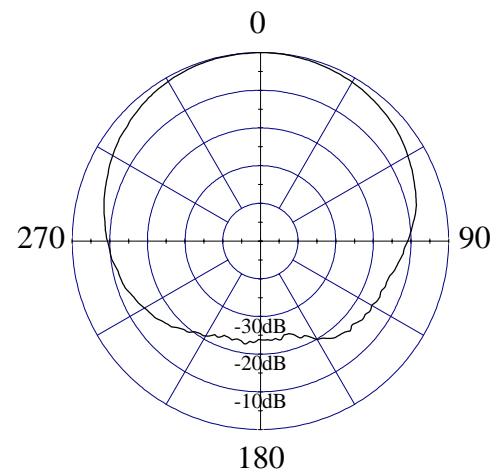
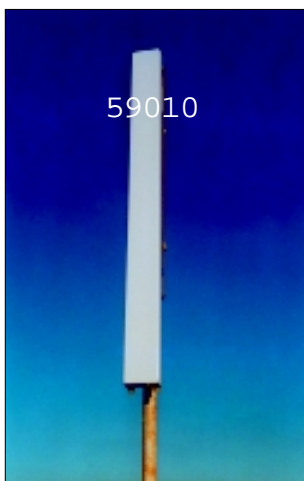
# Model 59010/59010S, 92°, 18.5 dBi (16.4 dBd) Panel

## ELECTRICAL CHARACTERISTICS

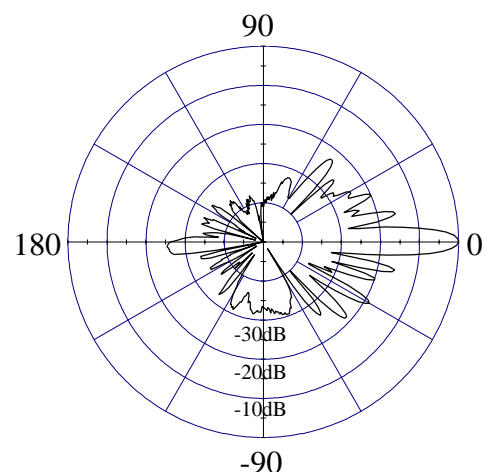
	<u>DCS / PCS</u>
<b>Frequency Range</b>	1710 - 1990 MHz
<b>Beamwidth: Horizontal-plane</b>	92° ± 3° (at -3 dB)
<b>Vertical-plane</b>	5.5° ± 1° (at -3 dB)
<b>Max/Min Gain</b>	18.5/17.5 dBi (16.4/15.4 dBd)
<b>Electrical Downtilt</b>	0° (available -2°, -3°, -4°, -6°)
<b>Side Lobes</b>	≤ -15 dB
<b>Front-to-Back Ratio</b>	≤ -25 dB

## GENERAL CHARACTERISTICS

<b>Impedance</b>	50 Ω
<b>VSWR</b>	≤ 1.4:1
<b>Polarization</b>	Vertical
<b>Rated Power</b>	500 W



**HORIZONTAL - PLANE**



**VERTICAL - PLANE**

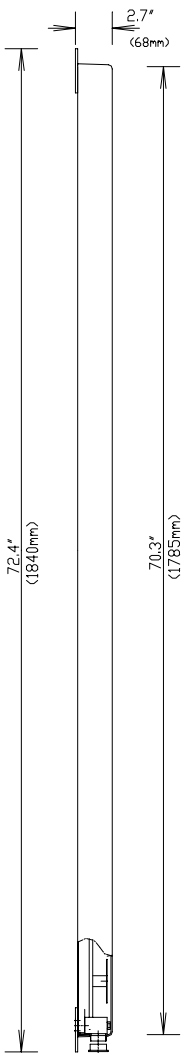


# Model 59010/59010S, 92°, 18.5 dBi (16.4 dBd) Panel

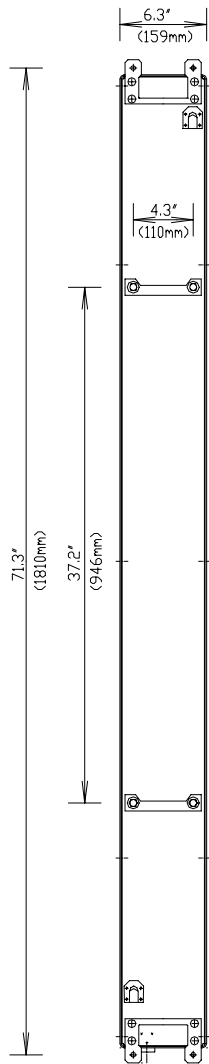
## MECHANICAL CHARACTERISTICS

<b>Height x Width x Depth</b>	70.3" x 6.3" x 2.7" (1785 x 159 x 68 mm)
<b>Weight</b>	14.6 lbs (6.6 kg)
<b>Wind Survival Rating</b>	125 mph (200 km/h)
<b>Wind Load (at 100 mph)</b>	510 N (frontal F1) 217 N (lateral F2)
<b>Flat Plate Equivalent Area</b>	3.05 ft <sup>2</sup> (0.28 m <sup>2</sup> )
<b>Connector Types (Female)</b>	7/16 DIN (Type N available)
<b>Materials:Antenna/Radome</b>	Aluminum / ABS

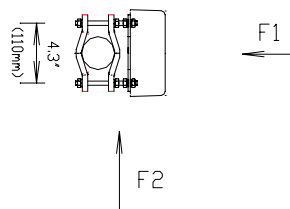
SIDE VIEW



REAR VIEW



TOP VIEW



## MOUNTING HARDWARE

<b>Mounting Brackets</b>	Fix 903 (1.25" - 3.5" OD pipe) (30 - 90 mm OD pipe)
<b>Mechanical Tilt Brackets (optional)</b>	Model TB-9 / TB-S