

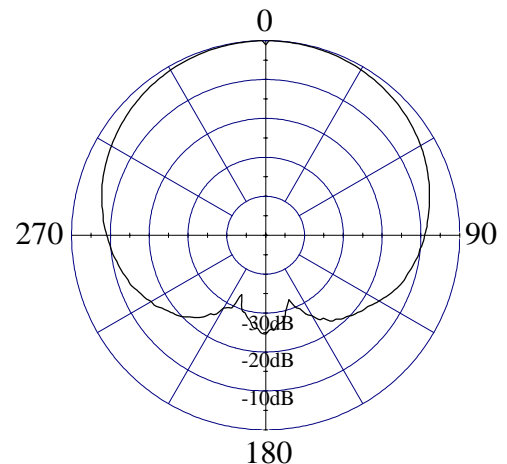
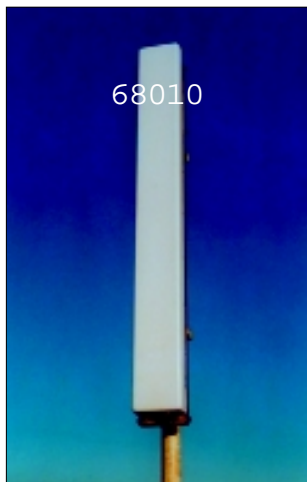
# Model 68010/68010S, 104°, 16.6 dBi (14.5 dBd) Panel

## ELECTRICAL CHARACTERISTICS

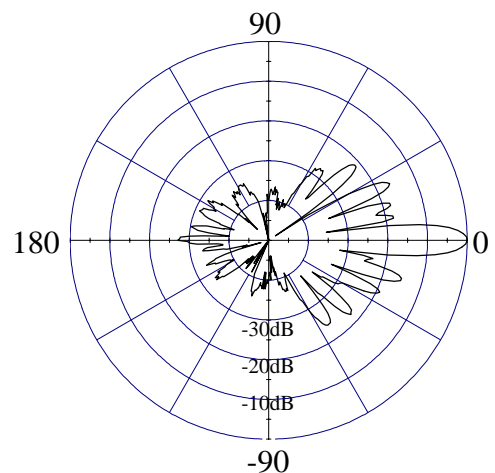
	<u>DCS / PCS</u>
Frequency Range	1710 - 1990 MHz
Beamwidth: Horizontal-plane Vertical-plane	104° ± 2° (at -3 dB) 7° ± 1° (at -3 dB)
Max/Min Gain	16.6/15.9 dBi (14.5/13.8 dBd)
Electrical Downtilt	0° (available -2°, -3°)
Side Lobes	≤ -15 dB
Front-to-Back Ratio	≤ -24 dB

## GENERAL CHARACTERISTICS

Impedance	50 Ω
VSWR	≤ 1.4:1
Polarization	Vertical
Rated Power	500 W



**HORIZONTAL - PLANE**



**VERTICAL - PLANE**

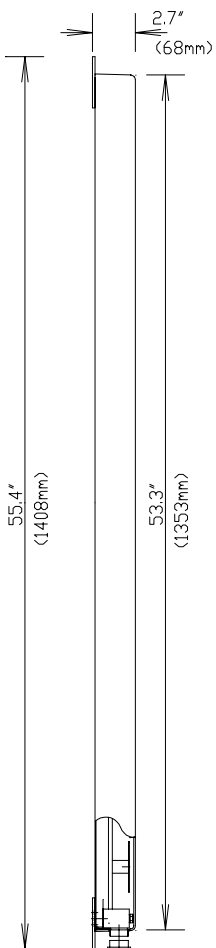


# Model 68010/68010S, 104°, 16.6 dBi (14.5 dBd) Panel

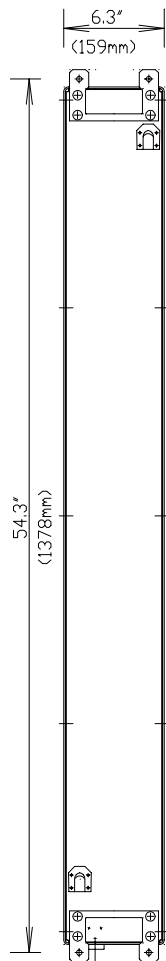
## MECHANICAL CHARACTERISTICS

<b>Height x Width x Depth</b>	53.3" x 6.3" x 2.7" (1353 x 159 x 68 mm)
<b>Weight</b>	11 lbs (5 kg)
<b>Wind Survival Rating</b>	125 mph (200 km/h)
<b>Wind Load (at 100 mph)</b>	363 N (frontal F1) 160 N (lateral F2)
<b>Flat Plate Equivalent Area</b>	2.31 ft <sup>2</sup> (0.22 m <sup>2</sup> )
<b>Connector Types (Female)</b>	7/16 DIN (Type N available)
<b>Materials: Antenna/Radome</b>	Aluminum / ABS

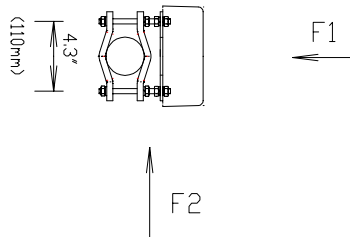
VUE DE COTE  
SIDE VIEW



VUE ARRIERE  
REAR VIEW



VUE DE DESSUS  
TOP VIEW



## MOUNTING HARDWARE

<b>Mounting Brackets</b>	Fix 903 (1.25" - 3.5" OD pipe) (30 - 90 mm OD pipe)
<b>Mechanical Tilt Brackets (optional)</b>	Model TB-6 / TB-S