

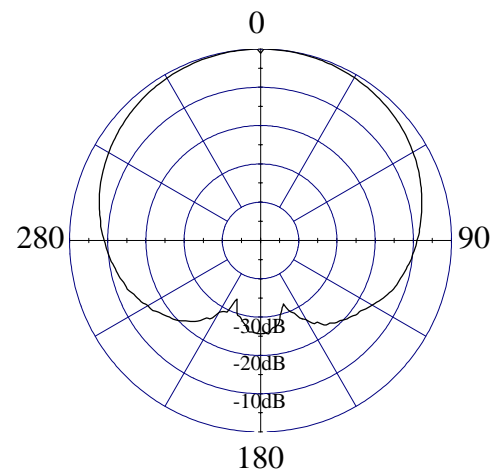
Model 69010/69010S, 104°, 17.9 dBi (15.8 dBd) Panel

ELECTRICAL CHARACTERISTICS

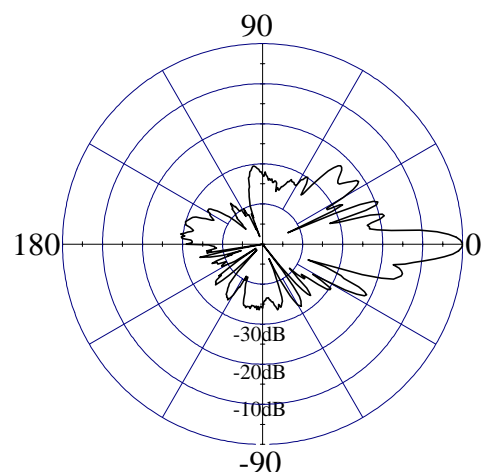
	<u>DCS / PCS</u>
Frequency Range	1710 - 1990 MHz
Beamwidth: Horizontal-plane	104° ± 2° (at -3 dB)
Vertical-plane	5.5° ± 1° (at -3 dB)
Max/Min Gain	17.9/17.2 dBi (15.8/15.1 dBd)
Electrical Downtilt	0° (available -2°, -6°, -10°)
Side Lobes	≤ -15 dB
Front-to-Back Ratio	≤ -24 dB

GENERAL CHARACTERISTICS

Impedance	50 Ω
VSWR	≤ 1.4:1
Polarization	Vertical
Rated Power	500 W



HORIZONTAL - PLANE



VERTICAL - PLANE

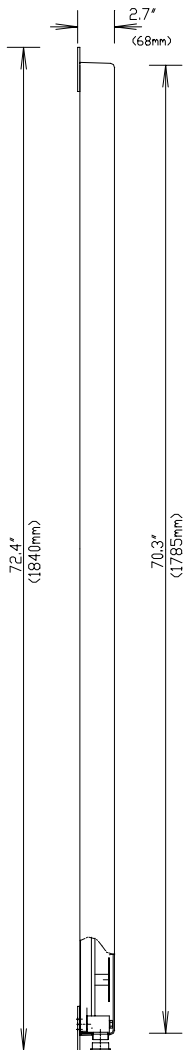


Model 69010/69010S, 104°, 17.9 dBi (15.8 dBd) Panel

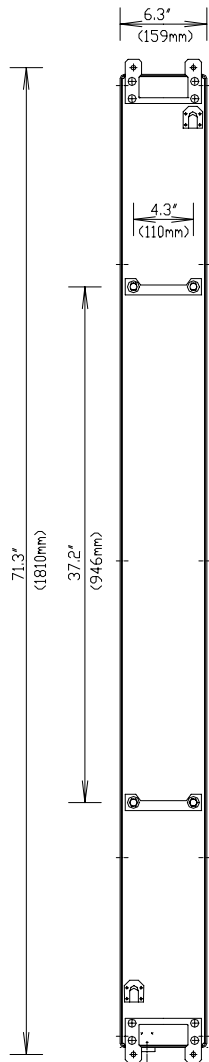
MECHANICAL CHARACTERISTICS

Height x Width x Depth	70.3" x 6.3" x 2.7" (1785 x 159 x 68 mm)
Weight	14.6 lbs (6.6 kg)
Wind Survival Rating	125 mph (200 km/h)
Wind Load (at 100 mph)	510 N (frontal F1) 217 N (lateral F2)
Flat Plate Equivalent Area	3.05 ft ² (0.28 m ²)
Connector Types (Female)	7/16 DIN (Type N available)
Materials:Antenna/Radome	Aluminum / ABS

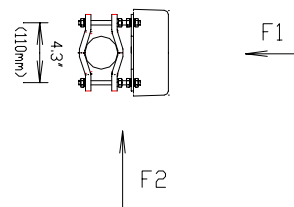
SIDE VIEW



REAR VIEW



TOP VIEW



MOUNTING HARDWARE

Mounting Brackets	Fix 903 (1.25" - 3.5" OD pipe) (30 - 90 mm OD pipe)
Mechanical Tilt Brackets (optional)	Model TB-9 / TB-S