

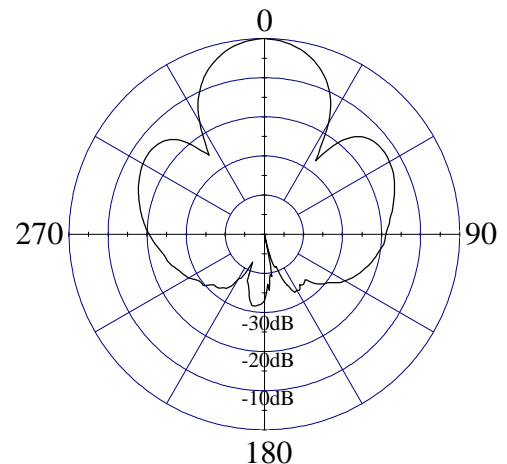
Model 78010/78010S, 29°, 22.5 dBi (20.4 dBd) Panel

ELECTRICAL CHARACTERISTICS

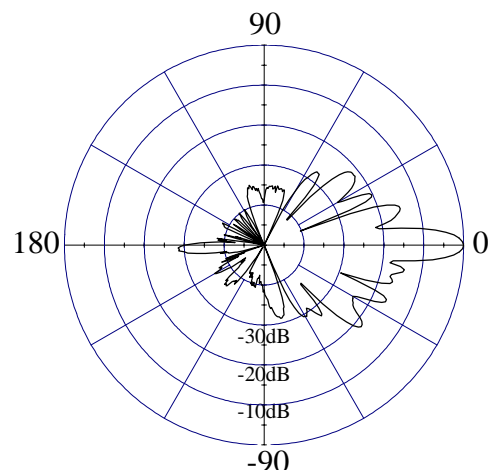
	<u>DCS / PCS</u>
Frequency Range	1710 - 1990 MHz
Beamwidth: Horizontal-plane	29° ± 2° (at -3 dB)
Vertical-plane	7° ± 1° (at -3 dB)
Max/Min Gain	22.5/21.5 dBi (20.4/19.4 dBd)
Electrical Downtilt	0° (available -2°, -4°)
Side Lobes	≤ -14 dB
Front-to-Back Ratio	≤ -30 dB

GENERAL CHARACTERISTICS

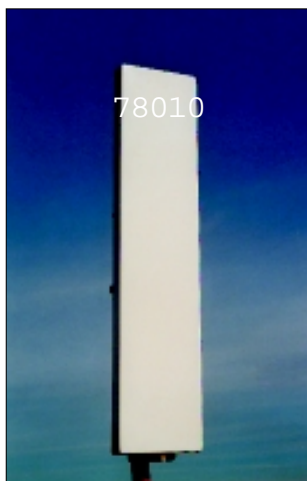
Impedance	50 Ω
VSWR	≤ 1.4:1
Polarization	Vertical
Rated Power	500 W



HORIZONTAL - PLANE



VERTICAL - PLANE



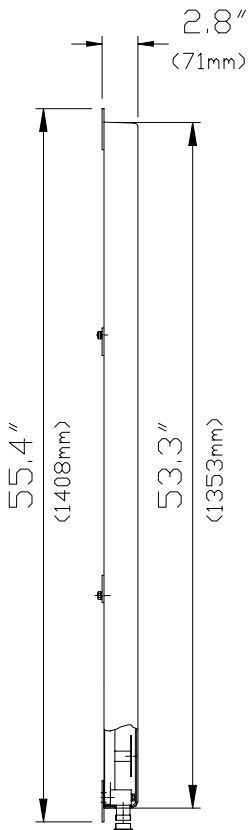


Model 78010/78010S, 29°, 22.5 dBi (20.4 dBd) Panel

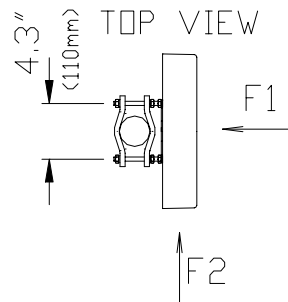
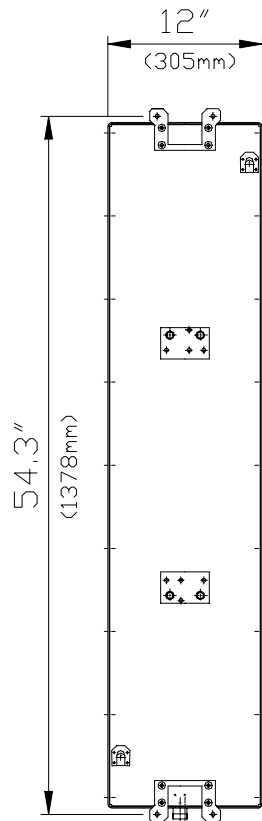
MECHANICAL CHARACTERISTICS

Height x Width x Depth	53.3" x 12" x 2.8" (1353 x 305 x 71 mm)
Weight	21.2 lbs (9.6 kg)
Wind Survival Rating	125 mph (200 km/h)
Wind Load (at 100 mph)	638 N (frontal F1) 196 N (lateral F2)
Flat Plate Equivalent Area	4.5 ft ² (0.42 m ²)
Connector Types (Female)	7/16 DIN (Type N available)
Materials:Antenna/Radome	Aluminum / ABS

SIDE VIEW



REAR VIEW



MOUNTING HARDWARE

Mounting Brackets	Fix 903 (1.25" - 3.5" OD pipe) (30 - 90 mm OD pipe)
Mechanical Tilt Brackets (optional)	Model TB-6B / TB-S