

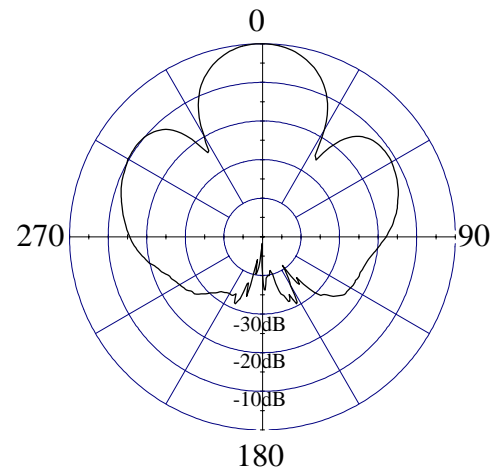
Model 79010/79010S, 29°, 23.8 dBi (21.7 dBd) Panel

ELECTRICAL CHARACTERISTICS

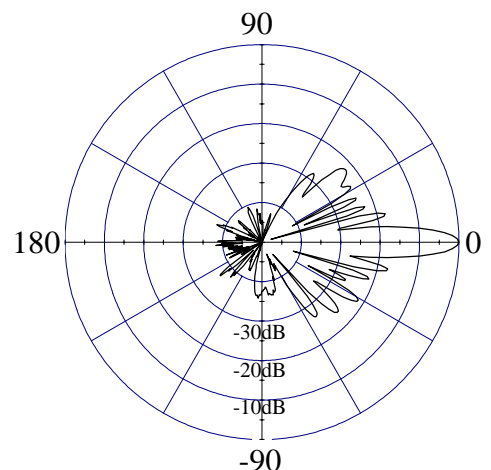
	<u>DCS / PCS</u>
Frequency Range	1710 - 1990 MHz
Beamwidth: Horizontal-plane	29° ± 2° (at -3 dB)
Vertical-plane	5.5° ± 1° (at -3 dB)
Max/Min Gain	23.8/22.8 dBi (21.7/20.7 dBd)
Electrical Downtilt	0° (available -2°, -6°, -8°)
Side Lobes	≤ -15 dB
Front-to-Back Ratio	≤ -31 dB

GENERAL CHARACTERISTICS

Impedance	50 Ω
VSWR	≤ 1.4:1
Polarization	Vertical
Rated Power	500 W



HORIZONTAL - PLANE



VERTICAL - PLANE

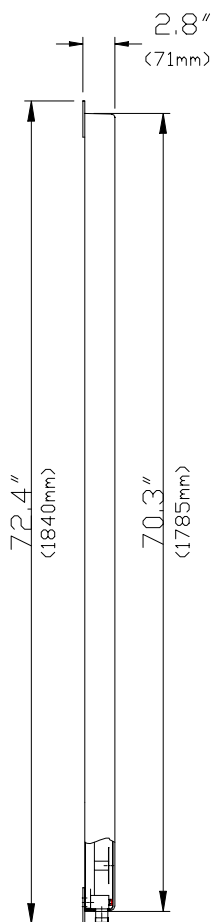


Model 79010/79010S, 29°, 23.8 dBi (21.7 dBd) Panel

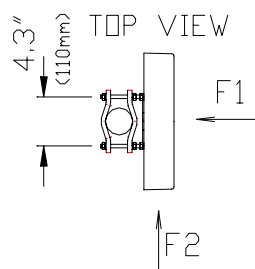
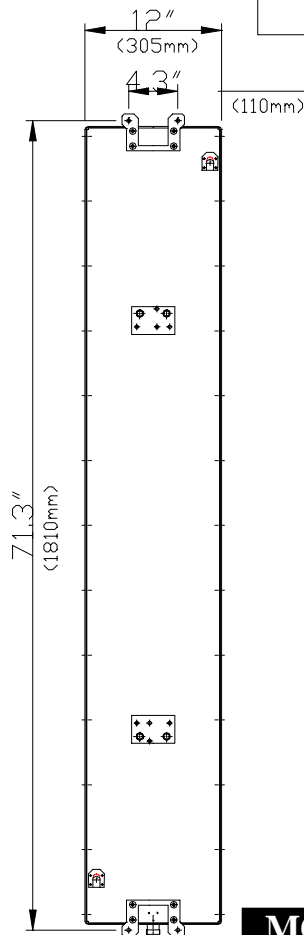
MECHANICAL CHARACTERISTICS

Height x Width x Depth	70.3" x 12" x 2.8" (1785 x 305 x 71 mm)
Weight	27.6 lbs (12.5 kg)
Wind Survival Rating	125 mph (200 km/h)
Wind Load (at 100 mph)	875 N (frontal F1) 265 N (lateral F2)
Flat Plate Equivalent Area	5.90 ft ² (0.54 m ²)
Connector Types (Female)	7/16 DIN (Type N available)
Materials:Antenna/Radome	Aluminum / ABS

SIDE VIEW



REAR VIEW



MOUNTING HARDWARE

Mounting Brackets	Fix 903 (1.25" - 3.5" OD pipe) (30 - 90 mm OD pipe)
Mechanical Tilt Brackets (optional)	Model TB-9B / TB-S